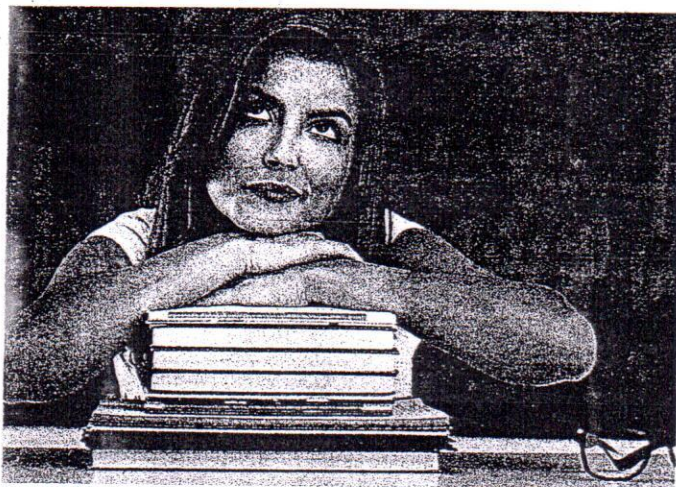


Business School SPECIAL

PUBLISHED SIMULTANEOUSLY FROM AHMEDABAD, BENGALURU, BHUBANESWAR, CHANDIGARH, CHENNAI, HYDERABAD, KOCHI, KOLKATA, LUCKNOW, MUMBAI (ALSO PRINTED IN BHOPAL), NEW DELHI AND PUNE

CHOOSING THE BEST

When considering a business school, accreditation, academic rigour and affordability are crucial factors



If you're looking to go to work for a major corporation or have dreams of running your own business someday, getting a business degree is an essential first step. But choosing the best business school is no easy task. So here it is: the Business School Special 2016-17 from Business Standard—an annual survey of the best business schools in India. Business Standard's easy-to-digest rankings pages will help you make an informed decision quickly. The compilation proves something that we have known all along: You simply can't keep a good man down. The smart B-schools of India have not let go of the momentum; those that have failed to keep up the good work and live up to the expectations of students and their parents have fallen

behind. That said, the reader might not see too many differences in the way the schools that have participated in the survey have been placed this year vis-à-vis their positions last year. That proves the other thing that we have heard through our student years—that consistency is a stepping stone to success.

The top schools on this list are known for their adaptability, innovation and thought leadership both in curriculum development and teaching. Many of them are active proponents of diversity in the classroom—they don't simply welcome it but actually seek it out. They take bankers, consultants, engineers and people from military backgrounds. The leaders of various programmes continue to evaluate future direction and immediate path,

and without doubt they will continue to tailor offerings and programmes to offer great experiences for the myriad professionals who can benefit from an MBA.

Like previous years, this special issue will give you different perspectives on the state of business education in India vis-à-vis the rest of the world and the specific challenges before institutions that offer higher education in India. In short, our effort is to give you a package that you simply can't afford to put down.

Inside

CHANGE IS THE ONLY CONSTANT 8

SUBHRO SEN

EMBRACE DISRUPTION 12

BALA V BALACHANDRAN

BECOMING GLOBAL 22

M G PARAMESWARAN

The class of 2017

RATINGS

SUPER LEAGUE 1

SUPER LEAGUE 1

| | AUDIT SPLIT | | | | | |
|--|--------------------|------------------|-----------------------|----------------------|---------------------------|---------------------|
| | OVERALL PERCENTILE | AUDIT PERCENTILE | PERCEPTION PERCENTILE | INTELLECTUAL CAPITAL | ADMISSIONS AND PLACEMENTS | SCALE OF OPERATIONS |
| Faculty of Management Studies, Delhi | 95 | 95 | 95 | 95 | 95 | 70 |
| Indian Institute of Foreign Trade, Delhi | 95 | 95 | 90 | 95 | 90 | 85 |
| Indian Institute of Management, Ahmedabad | 95 | 95 | 95 | 95 | 95 | 95 |
| Indian Institute of Management, Calcutta | 95 | 95 | 95 | 90 | 95 | 95 |
| Indian Institute of Management, Indore | 95 | 95 | 95 | 90 | 80 | 85 |
| Indian Institute of Management, Kozhikode | 95 | 95 | 95 | 95 | 70 | 85 |
| Management Development Institute, Gurugram | 95 | 95 | 90 | 95 | 90 | 95 |
| SP Jain Institute of Management & Research, Mumbai | 95 | 95 | 90 | 95 | 85 | 85 |
| XLRI, Jamshedpur | 95 | 95 | 95 | 95 | 90 | 90 |

2 Business School SPECIAL

HOW TO READ THE RATINGS

The methodology for the best Business School rankings uses a combination of self-audit by the institutes and an external rating by industry. The audit module has been refreshed to make it more robust.

The final ranking of the business schools that have participated this year has been obtained by arriving at a weighted composite score comprising the audit index and the perception index. The audit index is calculated on the basis of a self-audit (with suitable back-checks) by the B-schools on six different parameters. The perception index is a weighted score arrived at by merging ratings obtained from the industry — alumni and HR professionals.

Each parameter has been assigned

a different weight based on the directions of an expert committee. The final scores are used to classify business schools in different categories. The categorisation has been done after analysing the distribution of the final scores and the inflection points on this distribution curve.

For example, at the two ends of the S-curve the inflection points are closer and, therefore, the sizes of the relative categories are smaller compared to the categories in the middle.

After the categorisation, percentile scores have been calculated for each parameter. Business schools in each category have been placed in an alphabetical order. That is why, in the

Super League 1, Faculty of Management Studies, Delhi, is on top and XLRI, Jamshedpur, is at the bottom although on the basis of the overall score, it could be the other way round. In other categories, this could have resulted in schools with a lower overall score to be listed above those with a higher score.

The scores given in the table represent the percentile scores for all the six parameters of the audit module and the perception module. No mathematical operations like addition or subtraction can be done on these scores. Also, the percentile scores do not follow a decreasing pattern as we go down the list. So schools with a score of 90 can be in Super League 2 as well as in A1.

EXCELLENT
GOOD
AVERAGE
POOR

